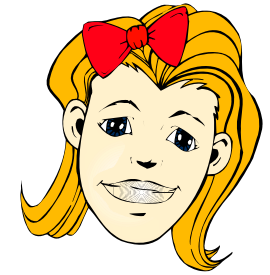


# Sam's Wardrobe

Name: \_\_\_\_\_

Class: \_\_\_\_\_



Read and colour the clothes in Sam's wardrobe. Start by finding the text in the maze.



T	h	i	w	n	p	a	n	t	o	w	e	a	r	h
e	b	s	o	h	S	s	t	s	w	o	r	b	r	e
S	o	i	r	e	l	i	k	e	n	p	a	n	t	s
a	r	s	b	d	n	a	t	r	e	h	h	t	i	w
m	d	S	h	a	s	a	r	g	e	n	t	h	e	w
h	r	a	o	n	i	p	i	r	h	W	t	e	k	e
a	a	m	s	k	t	s	h	e	e	n	j	a	c	a
s	w	s	l	a	e	h	S	t	r	i	r	e	h	t
m	a	n	e	s	S	a	h	i	i	s	e	l	l	o
c	l	y	o	i	a	m	s	r	k	c	y	r	e	w
l	u	b	h	r	p	h	e	t	s	o	r	s	h	c
o	f	e	s	o	a	a	l	a	e	l	a	e	w	o
t	i	a	d	f	s	s	p	n	u	d	S	a	m	a
h	t	u	e	r	a	a	r	d	l					t
e	s	S	h	e	h	p	u	a	b					

This is Sam's wardrobe. Sam has many beautiful clothes. She has a pair of red shoes. Sam has a purple shirt and a blue skirt. She also has a pink t-shirt and brown pants. She likes to wear her brown pants with her green jacket. When the weather is cold, Sam wears her yellow coat.